



**ISABELLA SANTOS**  
FOUNDATION

*Beat Cancer. Grow Hair. Live My Dreams.*



# WHY ISF?

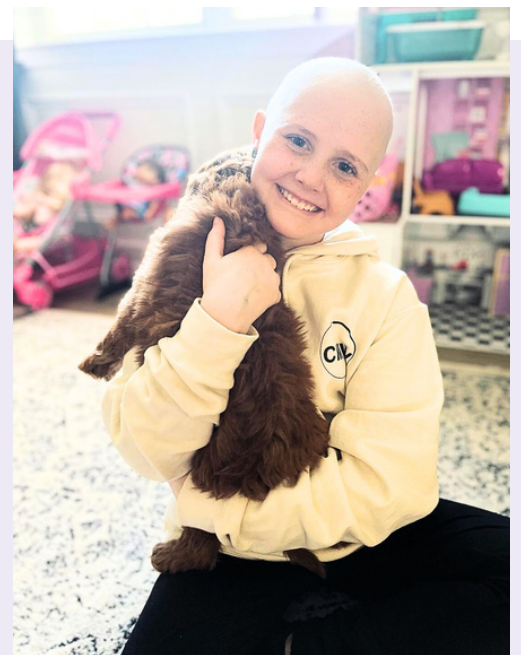
Isabella fought neuroblastoma, a form of rare cancer, for five years and ran out of treatment options. This is the case for many other children diagnosed with rare cancers. Pediatric cancer is not just one disease - it is made up of 12 major types and over 100 subtypes so it falls into its own category with little to no funding.

It's up to private foundations like the Isabella Santos Foundation (ISF) to raise essential funds for research and new treatment programs that will give the families affected a fighting chance.

## OUR PROGRESS

- ✓ **Over \$7M** Raised to Support Our Mission
- ✓ Hired **Top Research Oncologists**
- ✓ Doubled the **Solid Tumor Patient Volume**
- ✓ Treated **Patients Traveling Worldwide** from 24+ Countries
- ✓ Opened **Pediatric Cancer Research Lab** at LCH
- ✓ **12 Clinical Trials** + Rare Cancer Studies Funded

In partnership with Atrium Health Levine Children's Hospital, ISF proudly announced the opening of the Isabella Santos Foundation Rare & Solid Tumor Program in July 2020, bringing world-class comprehensive care, access to the latest clinical trials and an exceptional patient experience to Charlotte, NC.



Our overarching mission is clear - to touch the lives of families battling rare pediatric cancer and significantly accelerate the pace at which life-changing questions are answered.

**BECOME A PART OF OUR MISSION | ISABELLASANTOSFOUNDATION.COM | @THEISFOUNDATION**

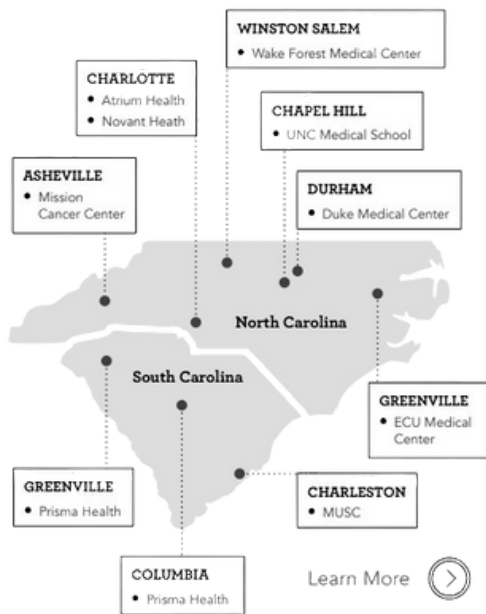
# WHAT'S NEXT

In 2024, ISF is expanding across the Carolinas to unite every single children's hospital in North and South Carolina with a single mission:  
**to make a greater impact.**

The Carolina Children's Cancer Coalition will identify and support 3-to 4 initiatives ranging from basic science and research, clinical trials, and survivorship in collaboration with Dr. Lars Wagner of Duke University and Dr. Javier Osterheld of Atrium Health, with an estimated annual funding requirement of \$2 million.



## INTRODUCING THE CAROLINA CHILDREN'S CANCER COALITION



Through this collaborative effort among hospitals, we will expand our impact from 130 children at Levine Children's Hospital in Charlotte to **over 1000 children** spanning the Carolinas.

### MAKE HISTORY WITH US BY JOINING A MOVEMENT WHERE GIVING TRULY MATTERS

This is a momentous step towards transforming the landscape of pediatric cancer research and providing hope to countless young lives worldwide.

For sponsorship opportunities, contact Karen Murphy, VP Strategic Partnerships [kmurphy@isabellasantosfoundation.com](mailto:kmurphy@isabellasantosfoundation.com).



**ISABELLA SANTOS**  
FOUNDATION  
*Beat Cancer. Grow Hair. Live My Dreams.*



# BENEFICIARY PROGRAMS

A beneficiary partnership is an excellent way for a local business to make a positive impact while gaining valuable brand awareness. These partnerships foster a meaningful company culture and customer engagement opportunities that make a big difference and leave a lasting impression.

**SIGNATURE CHARITY PARTNER | DINE + DONATE EVENTS  
MENU MATCH | COMMUNITY EVENTS PARTNER | SEPTEMBER  
SUPPORTER | HOST FOR HOPE | SOCIAL AMBASSADOR**

*"Much of our research on rare cancers will be done solely using ISF donations for the rare and solid tumor program and we cannot be successful without your partnership. During this exciting time, it is more important than ever to have ISF support the growth of research and clinical operations for the children of Charlotte and beyond because, without that support, we will not be successful."*

- Javier Oesterheld MD  
Director of Pediatric Hematology,  
Oncology & BMT  
Levine Children's Hospital

## MARKETING REACH



31,000  
subscribers



Over 16,000  
followers



Over 6,700  
followers

## CHILDHOOD CANCER BY THE NUMBERS

**46** children are **diagnosed**  
in the U.S. each day

**4%** of the National Cancer  
Institute's **annual budget**

**12** **major types and 100+ subtypes**  
exist - it's not just one disease

**71** average **years of life**  
**lost** to different types

**1:5** ratio of diagnosed children  
who **do not survive**

**2X** survivors are **twice as likely** to  
suffer chronic health problems

## IMPACT TO DATE

**\$7M**

ISF has funded over \$7 million to expand the scope of rare pediatric cancer research and treatment options, improve survival rates and support thousands of families affected.



BECOME A PART OF OUR MISSION | ISABELLASANTOSFOUNDATION.COM | @THEISFOUNDATION



# 2024 SIGNATURE EVENTS

ELEVATE PEDIATRIC ONCOLOGY. BUILD A GLOBAL PROGRAM. BOOST SURVIVAL RATES. FUND RESEARCH. GIVE GREATER.



## Every Experience Supports ISF's Mission

### Community Events For A Cause

March 22 | A Speakeasy Soiree

TBD | Spring FamFest

June 24 | Birdies, Bourbon & Beer Golf Tournament

September 1-30 | September Supporter Campaign

September 30 | Brunch Festival

October 29-30 | Coffee at Carmel Fall Fundraiser

---

### Sponsor-Specific Events + Networking Opportunities

Spring Networking | Sustaining Sponsors & Three Wish Society

Family Day with LCH | Volunteer Opportunity for Supporters

Fall Donor Acquisition Event

End of Year Celebration + Sponsor Appreciation

Stay connected at [isabellasantosfoundation.com](https://isabellasantosfoundation.com) | @theisfoundation

For sponsorship opportunities, contact [Karen Murphy](#) at 704.281.3397