



ISABELLA SANTOS FOUNDATION

Beat Cancer. Grow Hair. Live My Dreams.



2020
IMPACT

our MISSION



Isabella Santos Foundation, ISF, is dedicated to improving rare pediatric cancer treatment options in an effort to increase the survival rates of kids with cancer. Over the course of fourteen years, ISF has funded \$6 million toward expanding the scope of research and treatment and supporting families impacted with cancer in a variety of ways.

beat CANCER

Investing in
pediatric cancer research



Brooklyn (Rhabdomyosarcoma)

grow HAIR

Strengthening
pediatric cancer trials



Maggie (CNS Neuroblastoma)

live my DREAMS

Supporting
families affected by cancer



Lily Knecht (Osteosarcoma)

EXECUTIVE DIRECTOR | ERIN SANTOS

Dear Friends,

The year 2020 and 2021 will go down in history as two years that significantly changed the way we do everything. The pandemic not only frightened those who were healthy, but it had an enormous effect on those who were not. Families with children who were fighting cancer were dealt with not only the fear of COVID, but all the other things that come along with a pandemic. The stress of travel precautions, hospitals locking down visitors, even hospital staff shortages. Needless to say, a stressful environment just became more stressful in the blink of an eye.

We here at ISF were also nervous. How would we respond to a situation where we could no longer host events, introduce you to these children or effectively communicate with you all about the needs of these children that were higher than ever? While each day brought more uncertainty, one thing remained constant – the unwavering support of this community who inspired us each and every day. During a time when we physically felt so disconnected, we found our bonds to you all to be stronger than ever.

We were forced to think outside the box and do everything we have ever done... differently. We found that virtual events can survive and at times even be beautiful. The Luminary event we hosted for Isabella's 16th birthday was hands down one of the most breathtaking moments I have ever been a part of here at ISF. A summer internship program was created to help high school and college students who may have lost their summer plans, make a difference in their communities. Large donations from organizations such as the JEM Project, The Greater Auto Dealers Association of Charlotte, Jersey Mike's, and the continued support of our Three Wish Society, helped bridge the gap between being able to support a program and being able to grow it.

Despite the outlook of the pandemic, we found ourselves more successful than we have ever been. We were able to give away \$1 million dollars for the first time in our history, and then went on to beat this number in 2021. Not only did you help support families in need of financial services, but you funded trials, hired the best doctors in the NATION, built a world-class program for kids with rare cancers and most importantly, you gave kids hope who needed it more than ever.

These last two years have taught us all so much. We have so much to be proud of and we hope you feel the same. I can't thank you all enough for all you have done to not only keep ISF alive, but you have helped transform this charity into something it can never come back from. We are changed forever. I thank you, my team thanks you, my board thanks you, these children thank you...and I know my daughter would thank you. Your support leaves me speechless.

I'm excited to see where 2022 takes us all.



Erin Santos

Executive Director



"We raised \$7,000 our first year and we thought we were so proud. Little did we know that one day we would be here - giving away a million dollars a year. I'm not sure I ever thought this day would come but now that it's here I feel like it's just the beginning."

Erin Santos

ISF EXECUTIVE DIRECTOR

2020-2021 *impact*



RECORD MILESTONES REACHED AMONG UNUSUAL YEARS

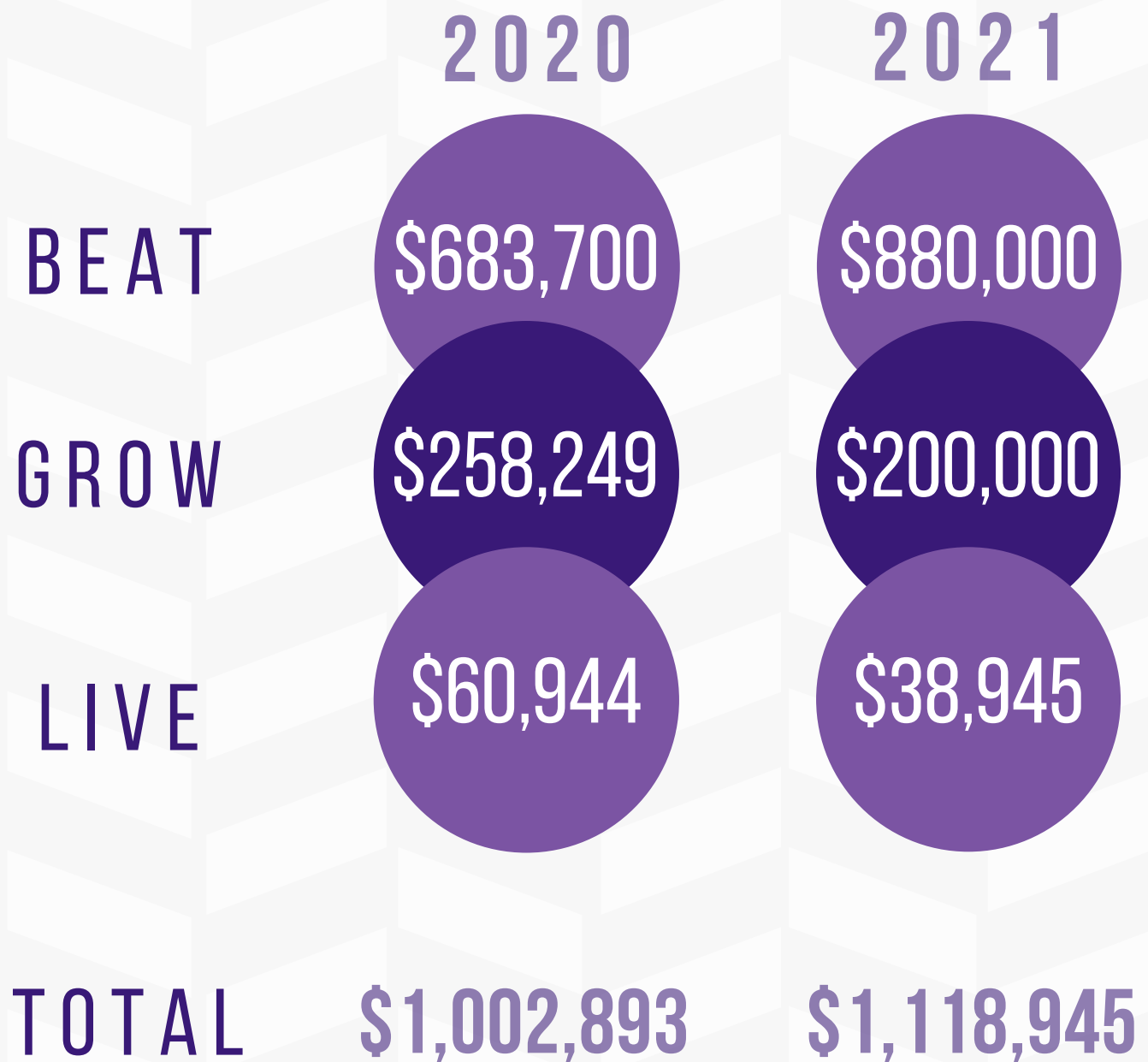
It was Isabella's wish to BEAT Cancer, GROW Hair, and LIVE Her Dreams. At the beginning of 2020, ISF updated its mission to fulfill these wishes in three categories. In the new mission's inaugural year, ISF gave back a total of just **over \$1 Million** through our giving categories and made a significant impact on each, thanks to the extraordinary support of donors.

During another challenging year when many charities experienced a decline in donations, ISF reimagined their fundraising with an elevation in support. In 2021, ISF did it again and gave away **over \$1 Million** for a second year in a row.

2020-2021 *impact*

\$2,121,838

Total Give Back Donations



2020-2021 *milestones*



WORLD-REKNOWNED ONCOLOGIST HIRED

Dr. Giselle Sholler joined Atrium Health Levine Children's as the Director of the Isabella Santos Foundation Rare & Solid Tumor Program in July 2020. Dr. Sholler's work has made her one of the world's top pediatric cancer doctors and researchers, bringing immeasurable value to the hospital and to the city of Charlotte.



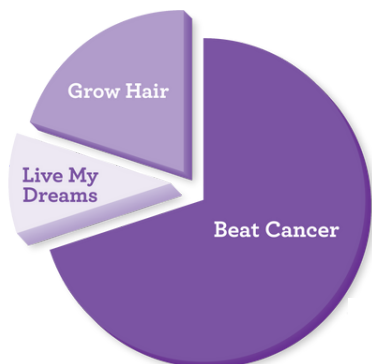
RARE & SOLID TUMOR PROGRAM ESTABLISHED

Along with Dr. Sholler's arrival in July 2020, the Isabella Santos Foundation Rare & Solid Tumor Program was established. Development of the Program requires the need for specialized personnel to help focus on patient treatment, research & novel therapies. ISF successfully funded the infrastructure including: Sarcoma Oncologist, Clinical Research Associate, Clinic Coordinator, Advanced Care Practitioner and Nutritionist.



FUNDED OSTEOSARCOMA TRIAL AT NATIONWIDE CHILDREN'S

ISF joined forces with Live Like Madison to co-fund a childhood cancer clinical trial out of Nationwide Children's in Ohio focused on creating a new way of treating kids fighting relapsed sarcomas. This collaboration brought together two pediatric cancer foundations to accomplish one purpose.



DONATED \$1MILLION FIRST TIME IN FOUNDATION HISTORY

For the first time since the foundation was established, ISF gave away \$1 Million dollars in the fight against pediatric cancers in 2020. \$1,002,892.15 to be exact. ISF gave back to each of its mission categories creating a 360-degree impact for kids fighting rare cancer, thanks to the extraordinary support of donors.

2020-2021 milestones



HELP FUND THE P.E.A.C.H. PROTOCOL CLINICAL TRIAL

Supported research for the P.E.A.C.H. Protocol, led by Dr. Sholler. This pediatric cancer clinical trial to test an innovative combination of molecular-guided therapy and personalized immunotherapy to treat DIPG and recurrent neuroblastoma. During the last week of September, the first neuroblastoma patient was enrolled on this trial here in Charlotte. ISF was one of many organizations to support this research.



LIVE MY DREAMS PROGRAM CREATED AT LEVINE CHILDREN'S

Established the Levine Children's 'Live My Dreams' program to help with specific needs of families being treated under the ISF Rare & Solid Tumor Program. With the increase of patients traveling to Charlotte for cancer care, it was clear we needed to extend an additional kind of aid than what we traditionally provide.



LAUNCHED SUMMER INTERN PROGRAM

With the challenges of the past two years, we reinvented our focus and shifted towards establishing new programs. ISF Launched a dynamic Summer Internship Program during the summer of 2020 to harness fundraising fuel from college and high school students. After two years, the program proved to have an immense impact on not only pediatric cancer, but developing future leaders.



CANCER MESSED WITH

Cancer Messed With, ISF's cancer support apparel brand created to further raise funds for pediatric cancer research, saw growth and a rebrand this year. Now, Cancer Messed With has been reenvisioned to unite and support ALL fighters. With new and trendy designs, CMW apparel makes you look good, feel good and do good. We kicked off this rebrand with our first cancer influencer, 2x neuroblastoma warrior Gavin Hill.

GIVING *highlight*

ISF RARE & SOLID TUMOR PROGRAM, LEVINE CHILDREN'S

Since the inception of ISF, we have partnered with Atrium Health and Levine Children's Hospital in Charlotte, N.C. This city is Isabella's birthplace, it's where ISF was founded. It's important to us to make monumental changes to pediatric cancer care in our backyard, and we are proud to stand next to Levine Children's to help make that possible. As we embark on our 15 year anniversary, it's incredible to look back on all that we have accomplished with Levine Children's in Isabella's name. That partnership has included helping fund several clinical trials and developmental therapeutics, as well as funding the MIBG therapy suite, one of 20 in the country. As well as providing support to families fighting for their kids' lives. So when Dr. Oesterheld of Levine Children's approached us about building a program for children with solid tumors, brain cancers, and rare cancers at the hospital, we were all in. And the ISF Rare & Solid Tumor Program was born.

The ISF Rare & Solid Tumor Program at Levine Children's provides the most comprehensive care and treatments for pediatric cancer in our community and across the globe. This clinic offers the most advanced clinical treatments, including precision medicine and novel clinical trials, to bring forward the newest therapies and improve outcomes in childhood cancer. The program opened in July 2020 with the arrival of world-renowned research oncologist, Dr. Giselle Sholler.

The ISF Rare & Solid Tumor Program is exceeding expectations as kids fighting rare cancers flood to Charlotte for treatment. Families looking for options have traveled from dozens of countries. Along with Dr. Sholler's arrival came a pediatric cancer research lab where dozens of clinical trials have opened and more are on the horizon. This program is reaching new heights and is becoming exactly what we set out to do... provide HOPE for kids fighting cancer around the region, country, and the world.



Dr. Giselle Sholler & Lillie Handley, 2012-2021 (Neuroblastoma)

"The growth that has occurred in Charlotte for Pediatric Oncology has largely been due to the partnership and generosity of the Isabella Santos Foundation. The clinic will grow to become an international and national destination healthcare for children with solid tumors, brain cancers, and rare cancers. In collaboration with the Levine Cancer Institute, we envision that every child diagnosed with a solid tumor here at Levine Children's will have their tumor collected, banked, sequenced, and created into cell lines for research. This is so important for us to learn all that we can about each child to help them as well as to perform research in our laboratory to help us create better treatments and new clinical trials."

Dr. Giselle Sholler, Director ISF Rare & Solid Tumor Program, Levine Children's



Madison Fedak, 2012-2019 (Osteosarcoma)

GIVING *highlight*

NATIONWIDE CHILDREN'S, THE TINKS TRIAL

*Isabella Santos Foundation & Live Like Madison
Collaborate to Fund Clinical Trial*

2012 wasn't just the year this world lost Isabella from neuroblastoma, a type of childhood cancer, it is also the year Madison Fedak was born. From the moment we met Madison, we felt Isabella. These two 7-year-olds were similar in so many ways. Their personalities. Their eagerness to help others. Their love for life and everyone around them.

Then 7 years later on December 21, 2019, Madison lost her life to osteosarcoma.

Throughout her year and a half-long battle, Madison touched countless lives. Not only those who knew Madison but also those who watched her journey from afar were inspired by her courage, her insistence on enjoying life and spreading happiness, despite her cancer.

Among the overwhelming heartbreak and sadness, Madison's family and friends moved into action to create the Live Like Madison Foundation, based out of Laurinburg, NC. With the help of an entire community standing with them, Live Like Madison is determined to continue Madison's legacy of creating something positive for kids like Madison who are fighting childhood cancers.

We knew we had to do something too. Something in honor of these two 7-year olds, who lived a similar life...7 years apart.

The Isabella Santos Foundation and Live Like Madison joined forces to honor Madison's life in a very special way. Together, our organizations donated \$100,000 each to fund a childhood cancer clinical trial out of Nationwide Children's in Ohio, The Tinks Trial, focused on creating a new way of treating kids fighting relapsed sarcomas. We were honored to have Charlotte-based nonprofit, Move for Jenn Foundation, join our fight by donating \$25,000 to help fulfill the last funding need for this trial and for 2020.



ISABELLA SANTOS
FOUNDATION
Beat Cancer. Grow Hair. Live My Dreams.



GIVING *highlight*



Star Light Star Bright Luminary Event

ISF HELPS FUND THE P.E.A.C.H. PROTOCOL

A very special ISF fundraising effort in March 2020, the Star Light Star Bright Luminary Event, resulted in our ability to grant \$100,000 to Atrium Health Levine Children's to help fund a leading-edge pediatric cancer clinical research trial.

Announced in September of 2021, research through The P.E.A.C.H. Protocol is currently underway to test an innovative combination of molecular-guided therapy and personalized immunotherapy to treat DIPG and recurrent neuroblastoma. The trial is led by ISF Rare & Solid Tumor Program Director, Dr. Sholler, alongside physician-scientists at the University of Florida. Neuroblastoma patients have been enrolled on this trial here in Charlotte, the arm of the program the ISF grant supported.

Supported by the Beat Childhood Cancer and Caroline's PEACH Foundation, this trial will allow oncologists to focus on treating each child's tumor with targeted drugs as well as by activating the patient's own immune system. This is a multi-million dollar trial and although we are just a small part of it, we are incredibly proud to be among so many other childhood cancer foundations who helped make this work possible: Milan's Miracle Fund, Brooke's Blossoming Hope for Childhood Cancer Foundation, and the Warrior Jace Foundation.



R-L, Divya Gandra (Researcher), Kim McKinney (Lab Manager)
& Dr. Sholler (Director)



Eli Newcomb (Neuroblastoma)

Nearly 30 families supported since through the 'Live My Dreams' Program

- A 7-year-old boy with relapsed neuroblastoma traveled here to enroll on the P.E.A.C.H. trial ISF helped fund.
- A 7-year-old boy from Germany and a 3-year-old boy from Hong Kong both with neuroblastoma traveled to Charlotte for DFMO. Assisted with lodging helped to offset the other travel costs.
- A 5-year-old boy with relapsed neuroblastoma traveled to Charlotte from Virginia for scans and to discuss treatment options.
- A 10-year-old boy with Ewing Sarcoma. His family lives about an hour and a half away and needed to stay closer to Levine Children's for his final round of outpatient chemotherapy. Thanks to the generosity of ISF, the family was able to stay 10 minutes away. The patient was very happy that he did not have to drive 3 hours round trip every day while managing chemotherapy side effects.
- A 4-year-old with metastatic Wilms Tumor. ISF's donation allowed them to stay local to Charlotte during the week-long outpatient chemotherapy treatment.
- A 5-year-old boy with relapsed neuroblastoma traveled from Virginia to undergo daily radiation. He was so excited that the hotel had a pool that Mom said he wanted his port to be de accessed every day to go swimming!

GIVING *highlight*

ISF CREATES LEVINE CHILDREN'S 'LIVE MY DREAMS' PROGRAM

As we saw the ISF Rare & Solid Tumor Program move at lightning speed in 2020 and more and more patients traveling to Charlotte for cancer treatment, it was clear we needed to extend an additional kind of aid than what we traditionally provide. New in 2021, we are excited to establish the Levine Children's 'Live My Dreams' program to help with specific needs of families being treated under the ISF Rare & Solid Tumor Program.

Since May of 2021, ISF has supported nearly 30 families being treated under the ISF Rare & Solid Tumor Program with \$20,000.

*"Thanks to the generosity of ISF, allowing him to stay in the hotel with home-cooked meals (and a pool!) allowed him to **feel like a kid** through this treatment."*

5- year-old boy with relapsed neuroblastoma traveling from Virginia for Danyelza receives aid through 'Live My Dreams' Program

FUNDRAISING *reimagined*

The last two years created tremendous obstacles for charities around the country with fundraising heavily reliant on in-person events and beneficiary opportunities. Many of these could not take place, so we reinvented our focus and shifted towards establishing new programs. Thinking outside of the box was a must for survival and the traditional mindset of fundraising took a backseat in order for new funding paths to emerge. These included our 2020 virtual 5K that broke fundraising records, and a dynamic internship program to harness the fundraising fuel from college and high school students. Additionally, the emphasis turned to obtaining support from businesses that were thriving, growing individual peer-to-peer opportunities in new ways, partnering with philanthropic grantmakers, and collaborating with tribute/legacy cancer families. We learned so many new things over the last two years and learned to look at the endless challenges as opportunities to reimagine ISF. And we did just that, these last two years changed the foundation for the better.

We now head into our 15th anniversary year, we have set even bigger goals. It's time to take everything we have learned, try more new things as we get back to events, and kick into high gear for all the kids fighting rare cancers.

"During times with so much negativity and fear of what was to come, we weren't even sure our doors would be open after COVID-19 hit last year. And now we are 2 years into some really strange times, but thanks to a hard-working team, our board of directors, local businesses, grants, and individual donors - we have found ourselves at the peak of our Foundation. Knowing what kids with cancer go through and how lonely these times must be for them and their families due to COVID-19, only pushed us to do all we can to help bring change to childhood cancer. We are excited about all that we have learned during these crazy two years! Kids fighting cancer deserve not to be forgotten, regardless of what is going on in the world today and we are honored to support them."

-Erin Santos, ISF Executive Director & Isabella's Mom



R-L, Erin Santos (Executive Director), Amanda DiFabio (Marketing Coordinator), Rachel Wood (Marketing Director), Maitland Danner (Operations Director), Karen Murphy (Sponsorships & Partnerships Director), Evan Synstad (Gilbane)

FUNDRAISING *highlight*



SUMMER INTERN PROGRAM

ISF Inagural Summer Intern Class Raised Over \$75,000 for Pediatric Cancer . We raised the bar in its 2nd year.

When COVID-19 struck in the spring of 2020 and we were facing extremely unprecedented times, ISF had to redirect our focus. Peer to peer virtual fundraising became the new reality, and the ISF team creatively worked to construct the Summer Intern Program.

On June 1st 2020, ISF brought on 5 Lead Student Interns to oversee a collective team of over 50 young adults, ranging from high school to graduate school, for what now has become an annual program. Their goal? Help the foundation take the 13th Annual 5k for Kids Cancer Virtual. In addition, the ISF team wanted to teach these future leaders about our mission to help children fighting rare pediatric cancers and have them spread hope and inspiration to their individual networks. By the end of the summer 2020, this program raised over \$78,000. The impact of this group was remarkable!

One year later, the 2nd annual Intern Program brought on a program sponsor, OrthoCarolina and almost doubled the program with 7 intern leads and over 100 young adults. During 2021, the program's focus was centered on gaining experience on becoming a leader, communicating with local businesses, and reporting on weekly goals and objectives with some help from our local Charlotte leaders and supporters. To say we were blown away by this group is an understatement. They raised over \$125,000 for rare pediatric cancers and brought in 25 sponsorships totaling \$54,000 for the 14th Annual 5K for Kids Cancer.

While COVID-19 brought about unusual times and challenges for everyone, our Intern Program has brought us so much hope. We cannot wait to watch it continue to grow in the future. All of our interns are truly inspiring and amazing young adults that have already furthered our mission and will continue to for years to come.

powered by **OrthoCarolina**

FUNDRAISING *highlight*



STAR LIGHT STAR BRIGHT

Isabella Santos Foundation Luminary Event Raises Over \$90,000 for Neuroblastoma Research

One glorious evening with a break from the rain, an unexpected purplish sunset, 1,600 purple glowing and heartfelt luminaries, and a community standing behind us helped make Tuesday, March 9th something extra special. A very special day in a very special place. With your support ISF's Star Light Star Bright Luminary Dedication event raised \$91,327 for Dr. Giselle Sholler's neuroblastoma and DIPG clinical trial at Levine Children's.

Hosted at Calvary Church where Isabella is laid to rest, the private luminary dedication event was created to help honor Isabella on what would have been her sweet 16. The support ISF felt was overwhelming and the dedications for loved ones affected by cancer were breathtaking. The proceeds will help fund Dr. Giselle Sholler's P.E.A.C.H. Protocol, a clinical trial focused on relapsed neuroblastoma and newly diagnosed DIPG.

Every detail for this evening was intentional... from the star-cut luminary bags to the purple lights we placed in them. The luminaries were set in 16 straight rows symbolizing how old Isabella should be today. And as a surprise that unfolded so perfectly into our plans, Calvary lit their majestic sanctuary up purple. It was breathtaking! Isabella's family hasn't been in there since her funeral, so to watch them take it all in was...well, hard to put into words. Calvary Church and its staff truly helped our Luminary vision happen in a way that was more beautiful than we could ever imagine. March 9th couldn't have been more perfect.



PARTNERS

giveback/beneficiary

During two of the most challenging years ever when events were simply not possible due to the current health environment, local businesses stepped up to support ISF. During 2020 and 2021, 38 giveback events were held raising \$608,636 for pediatric cancer.

Company giveback programs consist of a restaurant or business offering a portion of proceeds from its sales and/or services back to a non-profit. Typically, it is during a specific time period or for a specific product, service, or menu item. These events are incredibly beneficial and allow nonprofits to use their networks to encourage their supporters to dine or shop at the local business that is giving back. People love to support businesses that care about helping others and giving back to their community.

2020 GIVEBACK PARTNERS

ALL-IN To Fight Cancer
Chakti Yoga
Jersey Mike's
MeltingPot Midtown & Melting Pot Lake Norman
NoDa Brewing Company
Providence Plastic Surgery & Skin Center

STIR Charlotte
SAS Cupcakes
Sharkey's Cuts for Kids
Sweet's Syrup
Tito's Handmade Vodka
William-Grace

2021 GIVEBACK PARTNERS

ALL-IN To Fight Cancer
Asian American Hotel Owners
BNi, Ballantyne @9 Chapter
Blakeney Wine Walk
Brixx Wood Fired Pizza + Craft Bar
Charlotte Auto Show/Greater Charlotte Auto Dealers
Davidson College
Gilbane Building Company
Jackson Orthodontics
Jersey Mike Month
Mini Mavs Dance Clinics
Mitchell Watts Family Foundation
Under the Stars Cinema & Soulful Sound

NoDa Brewing Company
Providence Plastic Surgery & Skin Center
Pure Intentions Coffee
Raintree Neighborhood Country Club
SAS Cupcakes
St. Matthew Catholic Elementary School
STIR Charlotte
Love, Tito's
Trash & Stash Junk Removal & Microstorage
Tryon Distributing
Two Thirty Seven Jewelry
Woodbridge & Friends Pop-Up

38
Events

\$608,636
Total Donated

GIVE BACK *highlights*

JERSEY MIKE'S SUBS



Jersey Mike's Subs served up record-breaking fundraising for its "Month of Giving" and "Day of Giving" campaigns in greater Charlotte raising more than \$293K in March of 2021 for pediatric cancer. "As a brand, Jersey Mike's is very passionate about giving back. We don't give to get, we give to give. With that being part of our culture and being a dad myself, it was a natural fit for the greater Charlotte franchisees to partner with the Isabella Santos Foundation." Erin and her amazing team's commitment to finding a cure for pediatric cancer is so contagious. We are honored to be part of that team."

-Nick Smith III, a local franchise owner of Jersey Mike's



CHARLOTTE AUTO SHOW



A few years ago an idea to bring 2 markets of people together, women and car dealers while raising money for pediatric cancer led to the kick-off event for the annual Charlotte Auto Show, Handbags, Heels & Horsepower. The Charlotte Auto Show believes in the mission of ISF and continues to work with us annually to make this event even more of a success. In 2021 the event raised \$76,692 for pediatric cancer! Over the last few years, the Charlotte Auto Show, Greater Charlotte Auto Dealers Association, and several local dealerships have raised nearly \$365,000 for pediatric cancer efforts right here in Charlotte, NC! Handbags, Heels & Horsepower has become the signature charity event to kick off the annual Charlotte Auto Show, and we love the continued commitment to partnership and bettering the community.



STIR CHARLOTTE



Since STIR's opening in Charlotte in August 2020, they have partnered with ISF twice a year to raise money for our mission. Thus far, STIR Charlotte and SquareOne Holding Company, together with Tito's Handmade Vodka, have raised over \$30,000 for pediatric cancer research through their various give-back programs! "We take customer service very seriously. Expanding that concept to include community service and team support is one more reason why I love what we do," said Dennis Korn, general manager at STIR. Ryan Hendrickson, chief operations officer at SquareOne added, "We are humbled by their work and will continue to be a frontline advocate for their activities."



GRANT *highlight*



The Isabella Santos Foundation Rare & Solid Tumor Program has quickly exploded, thanks in huge part to the generous support from our friends at The JEM Project.

We first met this incredible organization on the brink of the beginning of the pandemic, as they were set to be our presenting sponsor for our 2020 Coffee for a Cure. We had no idea what was ahead and were so deflated when the world was shutting down, just weeks before this event was to take place. It was a huge part of our annual fundraising and at a time we needed it most. The Rare and Solid Tumor program was just starting to take shape and we were relying on this event to help keep that momentum going. When we had to cancel, we were devastated. We received a call from The Jem Project and to our amazement, were awarded a grant to cover what the event would have brought in. This phone call brought our team to tears during such an uncertain time and was the single moment in 2020 that gave our team hope, amidst so much confusion. It allowed us to reset our mindset for the year ahead and helped us remain positive. In that moment, we were able to take a deep breath and know that the care we had committed to providing these kids would not stop, even if the world appeared to be. It also challenged us to dig deep to ensure we would make it the best year yet, regardless of circumstance.

Since then, we have developed a beautiful relationship with this organization making an impact across the nation. For us, they changed the trajectory of ISF during a frightening time and have continued to support us by believing in our mission and truly understanding what we are building in this community. In 2021, they challenged our donors to give on Giving Tuesday, as they would match dollar for dollar, up to \$50,000. Not only did we make it, but it was our most successful Giving Tuesday yet. It helped provide two times the hope for kids fighting rare cancers. Their total impact to ISF over the past two years is \$533,000.

The ISF Rare and Solid Tumor program treats rare pediatric cancers and develops clinical research trials. Patient volume has grown over 150% since the program opened in July 2020 with patients traveling to Charlotte from all over the world. This success would not have happened without the support of The JEM Project. Not only are we incredibly grateful for their partnership, but humbly know that we would have not been able to get where we are today, without their support.

2020 *sponsors*

SUSTAINING SPONSORS

ALL-IN To Fight Cancer
Atrium Health Levine Children's and Atrium Health
Foundation
Brighthouse Financial
Greater Charlotte Auto Dealers Association (GCADA)
& Charlotte Auto Show

JE Dunn Construction
Jersey Mike's
NoDa Brewing Company
OneBlood
OrthoCarolina
Scoopcharlotte.com
Tito's Handmade Vodka

CORPORATE SPONSORS

ACN
Adam Faulk Tanskley Foundation (AFTF)
ALL-IN To Fight Cancer
Arborscapes
Aten & Garofalo Dentistry
ATRIUM Health/ Levine Children's
Ballantyne Pediatric Dentistry
barre3
Blink Eyecare and Eyewear
Braces by Bird & Bird Pediatric Dentistry
Brighthouse Financial
Charlotte Auto Show / Greater Charlotte Automobile
Dealers Association
Cardinal Financial
The Charlotte Ledger
Charlotte Radiology
Charlotte Real Estate Photos
Cochrane Steel
CPI Security
Crest Leather
Confetti Castle
Dickens Mitchener
Ditesheim Cosmetic Surgery
Ernst & Young
ESP Associates, Inc.
Famous Toastery
Firebirds
Foreign Cars Charlotte
Frontier Growth Foundation
Gorilla Stone
iNET45 Business Solutions
JE Dunn Construction
the JEM Project
Jersey Mike's

Laffter
Lauren Friday Photography
LendingTree Foundation
Luxe Lifestyle Magazine
Magnolia Cottage Design
MassMutual Carolinas / Hands & Feet Foundation
Mercedes Benz of South Charlotte
The Morgan Companies
Nation Ford Chemical
New Creations Flowers
New Dominion Bank
NoDa Brewing
Novant Health Carmel OB/GYN
OneBlood
Omada Solutions
OrthoCarolina
Pearl. Dentistry Reimagined
Piedmont Natural Gas
Pure Intentions Coffee
Roaring Riot
Redstone Family Vision
Salesforce
Sara's YMCA
SCOOP CLT
SignUpGenius
Small Hands Big Art
South Charlotte Lifestyle magazine
South Park Pediatric Dentistry
Sweet's Syrup
Three Leaf Orthodontics
Tito's Handmade Vodka
Tom Bush Law Group
Troutman Pepper
Uwharrie Bank
Volkswagen of South Charlotte

2021 *sponsors*

SUSTAINING SPONSORS

ALL-IN To Fight Cancer

Atrium Health Levine Children's and Atrium Health Foundation

Brighthouse Financial

Greater Charlotte Auto Dealers Association (GCADA) & Charlotte Auto Show

JE Dunn Construction

Jersey Mike's

NoDa Brewing Company

OneBlood

OrthoCarolina

Scoopcharlotte.com

Tito's Handmade Vodka

CORPORATE SPONSORS

5th Street Group

Adam Faulk Tansley Foundation (ATF)

Alfa Romeo Charlotte (Foreign Cars CLT)

Arborscapes

Atrium Health Levine Children's & Atrium Health Foundation

Balfour Beatty

Barringer Construction

Belk

Braces by Bird & Bird Pediatric Dentistry

Brixx Wood Fired Pizza + Craft Bar

Cadwalader, Wickersham & Taft LLP

Cardinal Digital Marketing

Carolina Facial Plastics

CBI | Workplace Solutions

CEENTA

Chad Johnson Orthodontics

Charlotte Radiology

Clean Juice

Compleat KiDZ

CO-OP Financial Services

CPI Security

Dale Jr. Foundation

Dickens Mitchener

Ernst & Young

Forest2Market

Foundry Commercial

Fox Rothschild

Gensler

Gilbane Building Company

Grey Matter Concepts

Grounds Guys of Ballantyne

Guided Solutions

Hendrick Auto Luxury Group

Hendrick Lexus

Hickory Tavern

iNET45 Business Solutions

Interior Elements

Jack Sipe Construction

Janney Montgomery Scott (LLC)

JE Dunn Construction

Keffer Auto Group

Laffter

Lake Norman Chrysler | Dodge | Jeep | Ram

LilBelle

Lincoln Financial Group

MassMutual Carolinas / Hands & Feet Foundation

McGuireWoods

Mercedes Benz of South Charlotte

Messer Construction Co.

Miller Street Dance Academy

The Morgan Companies

Mr. Tokyo Japanese Restaurant

Nation Ford Chemical

NEWMARK

NoDa Brewing Company

Northwood

Novant Health Carmel OB/GYN

Omada Solutions

OneBlood

OrthoCarolina

Parker Poe Attorneys & Counselors at Law

Park National Bank

Perkins Family

Piedmont Natural Gas

Playbook Management Company

Pure Intentions Coffee

RAM Pavement

Redline Design Group

Robinson Bradshaw

Pure Intentions Coffee

RAM Pavement

Redline Design Group

Robinson Bradshaw

Sara's YMCA

Schleich USA Inc.

Scott Clark Auto Group

Showalter Construction Co.

Small Hands Big Art

Sonic Automotive

South Park Pediatric Dentistry

Stealth Components

Tap Cancer Out

The Fallon Company

Three Leaf Orthodontics

Tindol Subaru

Tito's Handmade Vodka

Tom Bush Law Group

Trash & Stash Junk Removal & Microstorage

Troutman Pepper

Viking Mergers & Acquisitions

WebbMason Marketing

Y-mAbs Therapeutics

York Development Group

DONOR *spotlight*

3 WISH SOCIETY

The Isabella Santos Foundation's 3 Wish Society is comprised of dynamic, committed, and passionate donors who have the influence and resources to significantly impact the efforts of ISF.

United by the vision of creating change for kids fighting rare cancers, 3 Wish Society members are afforded an insider's opportunity to collaborate with the organization and use their network and influence to help make meaningful contributions.

With your annual gift of \$2,500, \$5,000, \$10,000, or more, you are taking your support of the Isabella Santos Foundation mission to a deeper level by funding research for rare pediatric cancers and helping to bring innovative treatment options to our local Charlotte community.

"I like to know that I can see where my money is going. And I feel like the Isabella Santos Foundation is one of the most tangible foundations out there. I'm always aware of what's happening and confident that my money is being put to good use. For me that's one of the most important things! I also like that it is local where my family is being raised and that there are so many families now coming to Charlotte for cancer care. I'm grateful to be part of it."

Megan Barlow
ISF 3 Wish Society Member

3 WISH SOCIETY MEMBERS

Thank you to the following individuals who commit to an annual gift of \$2,500+

Brad and Aileen Westover
Kristina and Frank Milillo
James and Melissa Scanlon
Mike and Tara Hopper
Tim and Jeanine Flanagan
Joe and Jennifer Pollino *
Jeff and Kristin Colson *
Donna Thomas
Howie and Lauren Lang
David and Kimberly Smith
Scott and Lisa Weaver
Megan Barlow
Rusty Atlas

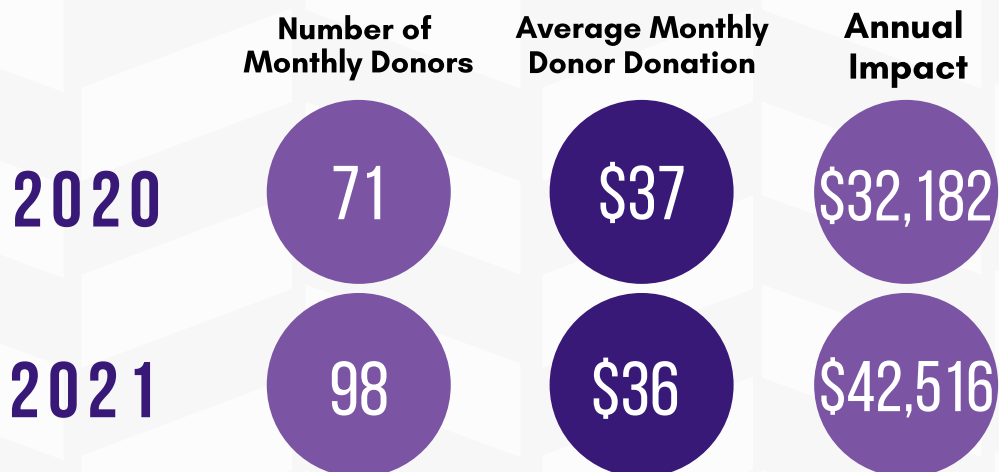
Jim and Sandra Szoke
Simon and Sherri Newman
Dr Tony and Dr Stephanie Kwon
Matthew Criscimagna
Conrad and Rachel Wood *
Ryan and Holly Hawley *
Stacey and Brian Ellis
David Porter
Landon Wyatt
Lynette Korte
John Barlow and Megan DeSana
Mark Mitchell
Jon and Katie Landy *
Kreg Newman and Kellye Whitmer

Brian Byars
Barb and Jim Wesley
Barbara Morgan
Jay and Linsey Spence
Brian Regan
Todd and Suzie Ford
Jeff and Ali Johnston
Dale and Cathie McDonald
Christy Dula
Fanya Thomson
Johnny McKellar
TJ and Lauren McKneely
Mike and Maggie O'Neill

**Indicates Company Match*

DONOR *spotlight*

MONTHLY DONORS



Thank you to the following individuals who commit to a monthly gift:

Lexi Bermudez
Kelly Blackmer
Keith & Christine Brent
KJ Brent
Madi Brent
Jennifer Bryant
Steve Bucci
Erin Burns
Brian Byars
Christa Cantrell
Joanne & Anthony Caterino
Morgan Caterino
Cynthia Chandler
Kate Cheek
Stacy Conder
Kevin & Kaily Cooke
Ned Criscimagna
Brooke Cullen
Maitland & Chad Danner
Hunter Davis
Hannah Dixon
Kirsten Dodd
Dae & Philip Dodds
Dr. Thomas & Sarah Douglas
Holly Duggan
Christy Dula
Michelle & Marc Dyman
Todd & Suzie Ford
Eric & Abbi Frick
Cherish Gilmartin
Ruth Gordon
Cathy & Martin Grable
Charlotte Guice

Peter & Leta Gunnell
Veronika Hartong
Joanne Hendrix
Colleen & Tom Hinsberg
Mike & Tara Hopper
Michael Huber
Gwen Hudson
Audra Johnson
Kristen Kennedy
Grace Koch
Alyse Lancaster
Karen & Jeff Laughton
Annika Leintz
Casey Lipscomb
Sidney Logan Echevarria
Catherine Luckadoo
Shannon Margies
Karen Mathias
Wendy Matthews
Frank & Lou McAfee
Tim & Debby McBride
Cathie & Dale McDonald
Lauren & TJ McNeely
Tim Miner
Fabius Mitchell
Mike Moman
Charles Moon Jr
John Mott
Karen & Kevin Murphy
Nathan Myers
Karen Nemzek
Eric Norman
Meagen O'Connell

Matt O'Connor
Michael Ochotorena
Sarah Olin
Nicole Oppedisano
Stacy & John Peterson
Debbie & Lynn Plummer
Denise Porter
Blair Primis
Mike & Amy Raubenolt
Annie Reed
Ashley Rogers
Shannon Shea
Jessyca Shuttleworth & Will Churm
Kimberly & David Smith
Kristine & Dave Sniegocki
Bob & Connie Stewart
Christopher Tapia
Natalie Van Noy
Jacob & Ashley Virgil
Jen & Derek Voorhees
Steven Vuong
Daniel Wagner
Jamie & Joe Walker
Erin Warren
Lisa & Scott Weaver
Aileen & Brad Westover
April Whitlock
Chris & Denise Wilcox
Rachel & Conrad Wood
Matt & Rita Yarmey
Brian & Amanda Young

DONOR *spotlight*

10,000 +

The JEM Project
Jersey Mike's
Live Like Madison
Greater Charlotte Auto Dealers
Atrium Health | AHF
Facebook
One Blood- CBCC
Brad and Aileen Westover
Tito's Handmade Vodka
Barbara Morgan | Brixx Wood Fired Pizza + Craft Bar
Keffer Auto Group
Steve Harris, Harris Development Group
Mike and Tara Hopper
NoDa Brewing Company
Frank and Kristina Milillo
Gilbane Building Company - Southeast Division
Move For Jenn Foundation
Brighthouse Financial
Square Up Foundation | STIR Charlotte
JE Dunn Construction
OrthoCarolina | The OrthoCarolina Foundation
Benevity
James and Melissa Scanlon
Jeff and Kristin Colson
Jaguar Land Rover Charlotte - Hendrick Luxury Group
Nation Ford Chemical
Providence Plastic Surgery
David and Kimberly Smith
Brian and Stacey Ellis
Megan Barlow
Tryon Distributing LLC
Donna Thomas
Scott and Lisa Weaver
Jim and Sandra Szoke
Timothy and Jeanine Flanagan
Rusty Atlas
Y-Mabs Therapeutics
Scott Clark Toyota
Simon and Sherri Newman
Howard and Lauren Lang
Lake Norman Chrysler Dodge Jeep Ram
Tony and Stephanie Kwon
Joe and Jennifer Pollino
The Hubble Foundation

9999-5000

TBank of America
Sweet's Syrup LLC
John Barlow and Megan DeSena
Matthew Criscimagna
Duke Energy Foundation
ACN
Lincoln Financial Group
Fanya Thomson
CO-OP Financial
Charlotte Eye Ear Nose & Throat Associates
PNC Foundation
Davidson College
Salesforce
Morgan Property Group
Marshall and Marion Fall
Novant Health Carmel OB/GYN
Ernst & Young US LLP
Laffter Inc.
Uwharrie Bank
Conrad and Rachel Wood
Adam Faulk Tanksley Foundation
Pure Intentions Coffee
Hendrick Acura
Law Offices of Tom Bush
Duke Energy Business Services
Mike and Maggie O'Neill
Ryan and Holly Hawley
The Philip Van Every Foundation
Lending Tree
Tindol Subaru
QC Kinetix
All-In to Fight Cancer
Charlotte Radiology & Carolinas Imaging Services
Park National Bank
Lynette Korte
Landon Wyatt

4999-2500

AAHOA
Mark Mitchell
Todd and Suzie Ford
Small Hands Big Art
Kreg Newman and Kellye Whitmer

DONOR *spotlight*

John Gardner
Your Cause
Brian and Nikki Byars
Mercedes-Benz of South Charlotte
Foreign Cars International
Blue Tee Golf Group
Giving Tree Realty
Michelle and Marc Dyman
James and Kayla Plummer
Jay and Linsey Spence
Clean Juice
Carolina Facial Plastics
Schleich USA
The Horne Co. Partners LLC
Dickens Mitchener
Arborscapes Inc.
Trash and Stash Junk Removal and Microstorage
Christy Dula
Mike Moman
Ali and Jeffrey Johnston
Jamie and Joe Walker
Dale and Cathie McDonald
CPI Security
Famous Toastery
Johnny McKellar
Red Line Design Group
Delta Dental of Missouri
Sonic Automotive
24 Foundation Inc
Publix North Carolina LP
Sokal Media Group Inc
TJ and Lauren McNeely
Barre 3
Play it Forward Central PA
Brian Regan
Balfour Beatty Construction
Three Leaf Orthodontics
Showalter Construction
James and Barbara Wesley

2499-1000

Nationwide
Blair Primis
Jennifer Voorhees
Vanguard Charitable Fund
Timothy & Debby McBride

Chris Wilcox
Amazon Smile
Frontier Growth Foundation
Jim and Anne Schoff
Rusty Wallace Inc.
Jamie Fenwick
Darren Bowen
Stacey Gonyer
Melissa Gay
Omada Solutions
Woody Charity Fund
Donna Schwartz
Matthew Yarmey
Kathy Yarmey
Christopher Dion
The Melting Pot
Wells Fargo Community Giving
RAM Pavement Services
Guided Solutions
Belk Inc.
Completekidz
Fox Rothschild
Hickory Tavern
Jon and Katie Landy
Janney Montgomery Scott LLC
McGuire Woods
Grey Matter Concepts Apparel Group
YMCA of Greater Charlotte
Mr Tokyo Restaurant
National Christian Foundation Carolinas
Roaring Riot
Miller Street Dance Academy
James Abbott
Sharon Properties
Southpark Pediatric Dentistry
The Melting Pot Lake Norman
Wells Fargo Foundation
Natalie Luttrell
AnneMarie Margies
iNet 45
Gregory Wilkerson
Braces by Bird and Bird Dentistry
Kirsten Dodd
Kimberly Zeitvogel
Natalie Tindol
Keith and Christine Brent
David and Kerry Winslow

Larry and Ann Atkinson
Stealth Components
Kelly Blackmer
Pledgeling Foundation
Debbie and Lynn Plummer
Viking Mergers and Aquisitions
Ned Criscimagna
Parker Poe Attorneys & Counselors at Law
Alfred M Jackson DDS MS PLLC
Heather Derrick
Jon Morris
Amick Farms LLC
Row for a Cure
Chris and Katherine Lauer
Mitchell Watts Family Foundation
Ally and Evan Synstad
Trent Corbin
Neil Underwood
SFTI LLC
Chad Kupreanik
Stuart Singer
Gorilla Stone
Spitzer Management Inc.
Pierre and Sandra Martimbeau M.D.
Billy Green
Nicholas Brewer
True Homes Foundation
Daniel and Sylvia Warren
TBWA Media Arts Lab
The Wolfe Family Charitable Gift Fund
Lowry and Associates
Randi Aitken
Volkswagen of South Charlotte
Michael Lewis
Mass Mutual of the Carolinas
Cardinal Financial Company
Cochrane Steel
Edwin Dalrymple
ESP Associates
Jim Clardy
John Mangan
Hendrick Motorsports
Howell Hallett
Mark Williams
Stephanie Brady
John Pappas
Mark Leary

DONOR *spotlight*

Robert and Anne Dooley III
Christina Baucom
Kevin Caldwell
William Anderson
Katherine Church
Justin Dean
Kathy Gardner
Mason Harris
Rick Kranitz
Jay Levell
Evan Mann
Lee Pisacano
Barry Pomeroy
Travis Schipper
Paul Shumaker

999-500

Michael Huber
Playbook Management Company
Zoe Pudela
Randi Beals
Christa Cantrell
Denise Porter
Ashley Redden
Newmark
Robinson Bradshaw
Jennifer Bryant
Eric Norman
Pete Stewart
Cadwalader Wickersham & Taft LLP
Gensler
Interior Elements
Barringer Construction
Tap Cancer Out
Katie Church
Messer Construction Co.
Jeff and Stacey Wilson
Cathy & Martin Grable
Tenley Nystrom
Audra Johnson
Jack Sipe Construction Company
York Development Group
5Church Inc
Arathi Nobles
Lilbelle LLC
Sarah Olin

Sultana Family
Ronald Veith
Tanya Greeley
Chad Johnson Orthodontics
Frank & Louise McAfee
Shannon Rock
Doris Ewing
Lance Primis
Michael Ochotorena
TIAA
Karen and Jeff Laughton
Sarma Rallapalli
Fidelity Charitable
Chris Ogbonna
Ruth Gordon
Andrew and Gwendolyn Lindner
Lily Pulitzer
e-Cycle
Erica Byer
AT&T
Charles Curtis
Alyse Lancaster
Chad and Maitland Danner
Greg Brouse
Rob Yarmey
April Whitlock
John and Diane McQuade
Gwen Hudson
AJ fiorenza
St. Matthew Catholic School
McKesson Foundation
Morgan Caterino
Bob and Connie Stewart
CyberGrants
Sandy Rollman Ovarian Cancer Foundation
Pate Masonry Supply LLC
Catherine Luckadoo
Kathy Starzecki
LESLIE PERLIK
Sylvia Freeman
Christopher Trevey
Calvin Wells
Lora Robbins
Peggy Cadmus
Hannah Rapaka
Amandah Greiling
Dale Jr Foundation

Gene Lowery Jr
Dependable Plumbing
Huneycutt Law PLLC
Murphy Lumber
Cardinal Digital Marketing
Lynne and Mike McDonald
Pounding For Parker Foundation
Vicki and Tad Latimer
Jen Flynn
Troutman Pepper
The Charlotte Ledger
Devin Crisco
CORNELIA DOLAN
Brown's Woodworking LLC
Judith Burton
Stanly County Automotive LLC DBA Joe Maus Ford
Holly Schoolmeester
Redstone Family Vision
Franklin Hightower
Timothy Wang
Adi Khindaria
Amy Wilson
Tom and Julie Wojciechowski
Metrolina Medical Associates
Whit Edwards
Brown and Senter PLLC - Attorneys At Law
Blink Eye Care and Eye Wear
Morton & Griffin Attorneys at Law
Janet Schoff
William Holman
EOG Resources Inc
Jen Schrader
Hendrick Lexus Charlotte
Builders First Source
Adam Green
Snider Inc.
Walter and Michele Fisher
Pete Landry
Thomas DiVittorio
Zach Cornwell
Amelia Fotiadis
Keith T. and Lisa Marie Ghezzi
Tyra Storm
Crest Leather LLC
Jeanne Meronek
HF Financial
GVA Productions

DONOR *spotlight*

Red Hat
John FitzHugh
Stephen and Melissa Wall
John Kirkland
Aten & Garofalo Dentistry
Melissa Wiebeck
Adwowa Afenyi-Annan
Paul Bell
Kelly Meek
Carolina Brewmasters
Manjula Somasundaram
Robert Latimer
Andrea Teeter
Pearl Dentistry Reimagined
Danielle and Victor Smith
Craig Gannaway
Tom and Carol Gardner
Walter Bentson
David Cochrane
Traci Cross
Tom Ellis
Doris Ewing
Donald Francis
Stuart Goldstein
Stephen Guice III
Stephanie Hebel
Todd Hebel
Herb & Margaret Hofmaier
Debbie Hopper
Robert Kemp
Dean Longo
Tammy Medlock
Robert Miller
Donna Reed
Douglas Runkel
Joseph Rushin
Mark Snider
Ron Weatherly
Walter Weiss
Geoffrey White
Jennifer Wong
Tracy George
Denise Hartmann
Colin Mutter
J Elle Design Inc I Jill Lehouiller
Brendi Bluiitt

499-250

Maria and Bill Stewart
Shannon Margies
One4All Charitable Fund
Erin Burns
Jessyca Shuttleworth and Will Churm
CAF - America Charities Aid Foundation of America
Shannel Kane
Jodi Malone
DT Carroll LLC / Fruttabowls Indian Trail
Aaron Smith
Newport Capital Ventures LLC/ Gold's Gym
Christine and Doug Robertson
Joanne Caterino
Barbara Gionti
Vac & Dash
Annika Leintz
Beth Arentsen
Kellie Hawkins
Greater Horizons/ JE Dunn Charitable Fund
Mitzi Byrd
Marvin Ridge High School
SAS Cupcakes
Grady Jeffreys
Boyd and Doris Helton
Sharkeys Cuts For Kids LLC
The Fallon Company
Foundry Commercial
Jays Seafood
Eliener Alfonso
Nathan Myers
Lori Foreman
KJ Brent
Lisa Palladino
Walter Fisher III
Lisa Stroupe
Rebecca Champion
Jeffrey Murray
Neeru Jain
Stacy Peterson
Jacob and Ashley Virgil
Meagen O'Connell
Kristine and Dave Sniegocki
Marvin Ridge Mavericks Athletics Booster Club
Dun Rite Professional Services

Constance Welling
Pinky Swear PACK at Western Carolina University
Jennifer Ford
Carol Jordan
Mary Dehnert
Matt OConnor
Peter and Leta Gunnell
Stephanie Grigg
George and Erica Manousos
Katie Tracy
Grapevine on NC
Emily Mecia
Drew Lamb
Stacy Conder
Kevin and Kaily Cooke
Cookies at Piper Glen LLC
Network for Good
Carrington Property Owners Association Inc
Holly Duggan
Max Tebben
Tim Miner
Recover Sports LLC
QCarolina Restaurants LLC
Joshua Levitas
Angela Miller
Paula Anderson
Bankers Insurance
Beth Carnes
Wheela Fortune
John Barnes
Eliza Neerincx
W. E. Burton
Debra Koebel
Allison Shuta
Sarah Douglas
Five Points Public House
Kim Wilkoff
William R Huneycutt CPA
Amanda DiFabio
Tom Nystrom
Courtney Tomchik
Kevin Lutick
Rebekah Alpert
Meg Hollingsworth
Sridevi Duggirala
Richard Maclean
Lawrence Wise

DONOR *spotlight*

Rachel Carlson
Rochelle Skarpalezos
Mitchell Davis
Robin Bennett
Paige Cohen
Magnolia Cottage Design
Samantha Manbodh
Leslie Lambert
Neil Nevich
Dahal Bumgardner
Bonnie Krempa
Margaret Reed
Peg Reed
John Williams
Arch Capital Group
Brian Young
Michael Friedle
Wendy Matthews
Christopher Tapia
Steven Vuong
Natalie Van Noy
Mark Nassif
William Osteen Jr
Patrick Bartels
Michelle Lust
Trinh Le
Vin Wells
Dean and Lucy Butler
CBI | Workplace Solutions
CROP TO CUP COFFEE IMPORTERS
Jillian Channer
Richard Davenport
Deba Sarma
Ryan Donaghy
Mark Carney
Sarma Rallapalli
Holly Liakakos
John Mims
Amy and Rob Pearse
Ace Bertin
Heather Paviol
Jim Jamison
Luis and Jessica Arocha
Cindy Braun
Martin White
Leslie and Mitchell Wickham
Michelle Maggs

Sam Bullard
Bonnie Patackis
Savor Brands Inc.
Paul Reichs
Vikki Hunley
Rob Rozz LLC
Erin Warren
Danielle Mathis
Hayden Home Mortgage LLC
Jennifer Haag
Jennifer Caterino
Jennifer Robertson
General Mills
Natasha Scrivener
Becki and Keith Thompson
Craig Danforth
Tim and Patricia Propst
Juliann Hector
James Laditka
Weston Andress
Chris Little
David Mann
Member Member of North Carolina LLC
Cynthia Wood
Rhonda Gioua
Rob Edwards
Todd Witt
Arthur and Alice Gallagher
Fernando Maisonett
KM Squared LLC | Grounds Guys of Ballantyne
Marcy Fenza
James Hodson
Monica Branning
Kathleen Sciacca
Michael Connor
Tanu Gulati
Laura Schlesing
Park Foundation
James Haygood
Daniel Gneuss
Hannah's Cans for Cancer
Sign Up Genius
Capital Land Partners
Kristi Monaghan
Tony Ruland
Wrens Village
Sarah Lewis

Carol Umstead
Erin Santos
Paul Denham
Roy Abernathy
Janet Baer
Charlie Boxx
Andrew Cordell
Kristen D'Eramo
Alli Davidson
Maureen Day
Emilu Dellinger
Herbert DeMart
Karisa Douglas
Ralph Duncan
Robert Eubanks
Xingzi Fang
Carroll Financial
Drew Forte
Michael Franklin
John Giambalvo
Jack Goldstein
Michael Grippio
Mary Gross
Linzell Harris
Vanessa Heiskell
Tim Holloway
Lynn Howe
Charlie Irani
Gregory Katz
Patsy Keever
Julie Lavitt
Annika Leintz
Rachel Martin
Chakrles Marvin
Taryn Mecia
Steven Menaker
Carlos Menendez
Sarah K Monk
Selena Nobilo
Matt Packey
Cynthia Piacentino
Blair Primis
Mark Reed
James Riedl
John Schoff
Nancy Scott
Maria Sekler

Rufus Simmons
Karen Suddreth
Philip Summa
Jeffry Van Dyke
Un Hui Vandevander
Michele White
Karen Williamson
Erin Wunder
Andi Zage

ISF *team*

BOARD OF DIRECTORS 2020-2021

Matt Yarmey
Suzie Ford
Sandra Szoke
Eric Frick
Jacob Virgil
KJ Brent
Mike Hopper
Geoff Rich

Blair Primis
Barbara Morgan
Charlotte Guice
Michael Huber
Matt Dubois
Neil Aldridge
Jonathan McFadden
Jay Lavell
Tim Miner
Meredith Dean



STAFF

Erin Santos | *Executive Director*

Maitland Danner | *Director of Operations*

Rachel Wood | *Director of Marketing*

Karen Murphy | *Director of Sponsorships & Partnerships*

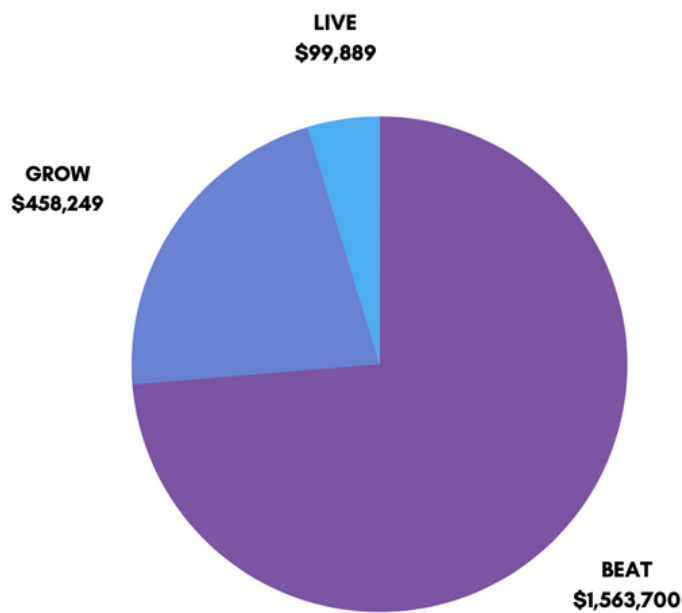
Amanda DiFabio | *Marketing Coordinator*

Ashton Barlow | *Development Director*



ANNUAL *financial highlights*

2020-2021 *Beat, Grow, Live* GIVE BACK IMPACT



2020-2021 BREAKDOWN

2020

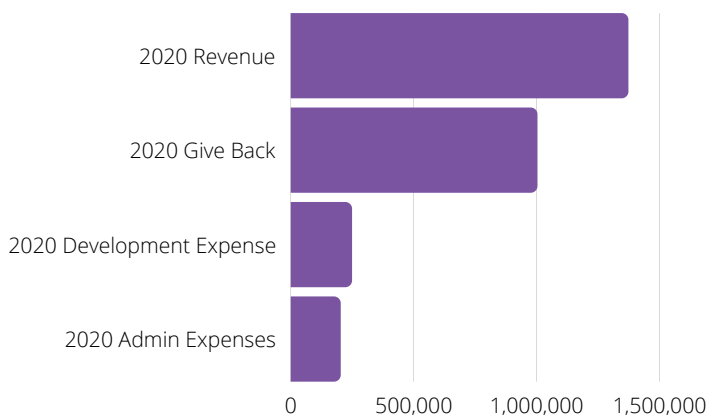
Total Revenue: \$ 1,372,227
 Total Give Back: \$ 1,002,893
 Development Expense: \$ 248,379
 Administrative Expense: \$ 202,254

2021

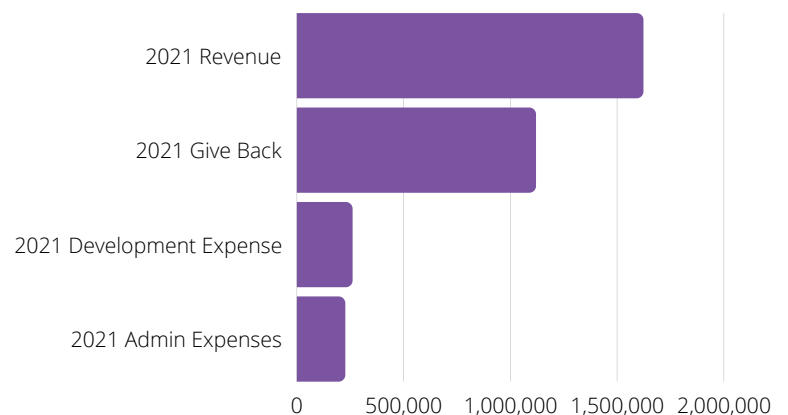
Total Revenue: \$ 1,622,119
 Total Give Back: \$ 1,118,945
 Development Expense: \$ 259,830
 Administrative Expense: \$ 225,732

At a Glance

2020 INCOME | EXPENSES



2021 INCOME | EXPENSES



*"Isabella's legacy
is loud. And the
decibel levels
just continue to
increase."*

KJ Brent

ISF BOARD OF
DIRECTORS





ISABELLA SANTOS FOUNDATION

Beat Cancer. Grow Hair. Live My Dreams.

9935-D REA ROAD UNIT 275 | CHARLOTTE, NC 28277 | 704-361-3074

ISABELLASANTOSFOUNDATION.ORG

EIN 26-1332748